

# MOD / NATO Disposals

ilitary vehicles and equipment for sale

[www.modsurplus.co.uk](http://www.modsurplus.co.uk)

Tel: +44 (0)1302-954007

[Return to Homepage](#) | E-Mail: [sales@modsurplus.co.uk](mailto:sales@modsurplus.co.uk)



REQUEST A QUOTE

or call us on UK +44(0)1302-954007

## Description / Ref

Mercedes Benz 250 G Wagon - 50323

Photo (a gallery of photos is provided below - where available)



## Details

Mercedes Benz G Wagon 250 Soft Top

This vehicle is available direct from the military in excellent condition. The vehicle has been prepared through our workshop to include servicing and repainting

As an option to we supply with a new canopy if required

The G is the name is short for Geländewagen (or cross-country vehicle / tough terrain vehicle) and was Mercedes first venture into general four-wheel drives

The vehicle canopy can be removed or folded along with a folding windscreen.

The same chassis frame design is used for both short and long wheelbase versions. They have closed box shaped side members in conjunction with tubular cross members, providing high bending and torsional stiffness in a ladder type frame to which the noise insulated

bodywork is attached by rubber mountings. The frame is corrosion protected and is also waxed and sealed.

Engine output is transmitted to the wheels using an all synchromesh five speed manual gearbox and a two shaft transfer case. The four wheel drive can be engaged when the vehicle is either stationary or moving. The cross country ratio can be engaged and disengaged when driving, to double the power to the wheels and reduce speed by half. The 100 per cent locking differentials on the front and rear axles can be engaged and disengaged individually during travel.

Payload for the 250GD version is 700 Kg's

Wheelbase; 2.4 M

Ground Clearance: 0.24 M

Fuel capacity: approx 96 litres

Max gradient: 80%

Fording: 0.6 M

Power assisted steering

Videos (if available)

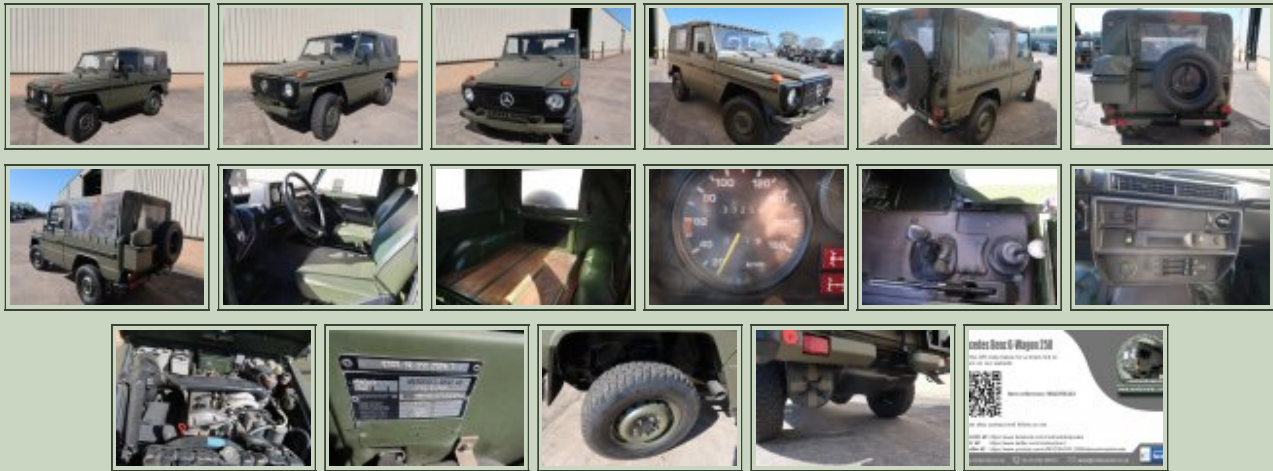
Category	Mercedes G Wagons	Length	4.5M
Manufacturer	Mercedes	Height	1.85M
Engine	OM602 92 HP 2.5 litre diesel	Width	1.7M
Gearbox	5 speed manual	GVW	2950 Kg's
Brakes	Drum brakes	Hrs_Kms	33,258 Kilometres
Steering	Power steering LHD	Date into Service	1990
Tyres	225/75R16	Year of Manufacture	1990
Max Load	700 kg's	Qty Available	1
Electrics	24 volts	Export Requirements <a href="#">...more</a>	OGEL/SIEL Licence Required



REQUEST A QUOTE

or call us on UK +44(0)1302-954007

Photo Gallery



■  
All prices qoted are GBP U.K. Pounds Sterling Ex. Works excluding VAT where applicable and shipping / associated costs.

■  
Vehicles advertised are subject to remaining unsold.

■  
All prices quoted are based on **"per individual unit"** purchased, any reductions on advertised price for multiple item orders is subject to negotiation and is conducted at the time of inspection or provision of LOI.

■  
Photo's shown above may represent a vehicle type rather than an actual vehicle, vehicles are available serviced and painted to customers preference

■  
An export licence may be required for items sold to customers outside of the U.K.  
**FOR MORE INFORMATION ON EXPORT LICENCING PROCEDURES**

**[CLICK HERE](#)**

**FOR INFORMATION ON CURRENT EU EMBARGOES**

**[CLICK HERE](#)**